

SCHOLARSHIPS

PROGRAM SUPPORT

SPECIAL PROJECTS

The Gift of Opportunity

Changing Lives - Achieving Dreams



GREAT FALLS COLLEGE
MONTANA STATE UNIVERSITY

WHO WE ARE

At Great Falls College MSU, we know that access to high-quality post secondary education is not only critical to the success of the students that we serve but also to our community and our economy. Our mission is to foster the success of our students and their communities through innovative, flexible learning opportunities for people of all ages, backgrounds, and aspirations, resulting in self-fulfillment and competitiveness in an increasingly global society.



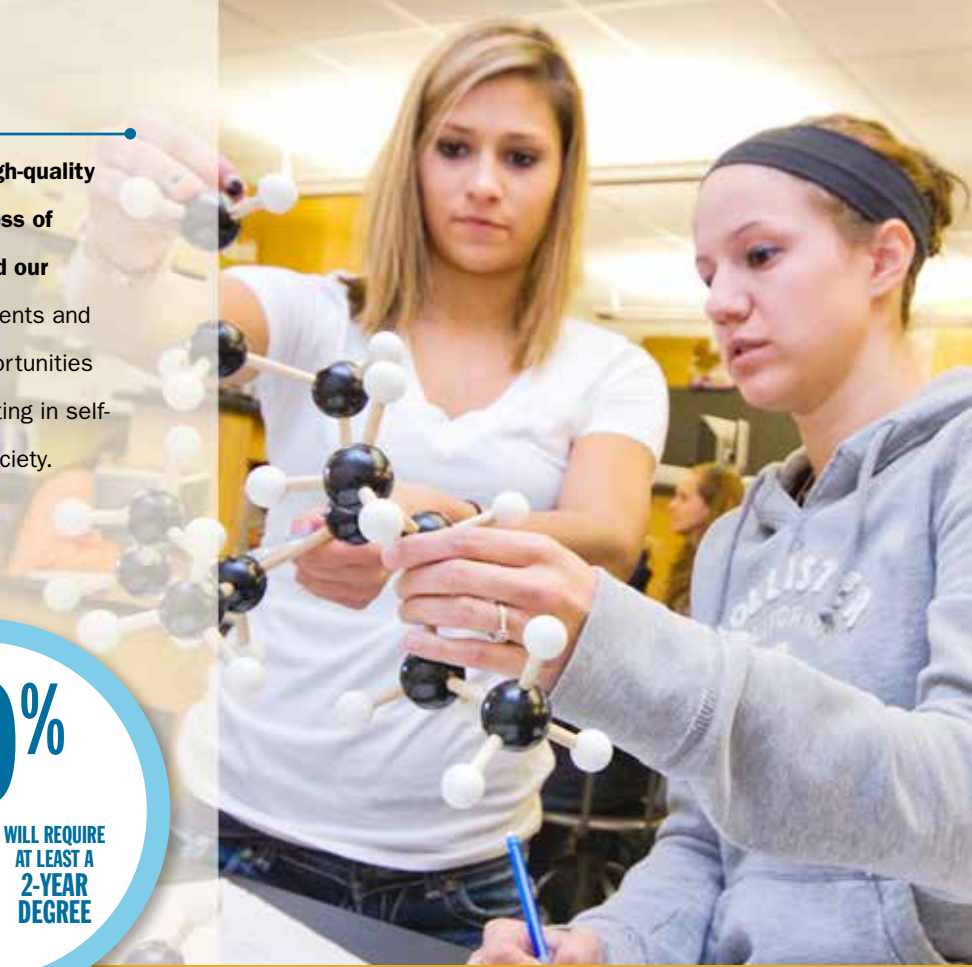
60%



WILL REQUIRE
AT LEAST A
2-YEAR
DEGREE

The Impact of
Your
Support

Great Falls College MSU graduates with an associate degree





WHO WE SERVE

Each year we are able to help many students who did not think it possible to achieve their educational and career goals. Students at Great Falls College MSU tend to have more responsibilities outside of school than traditional college students. Consequently, without financial support, higher education is not a possibility for many students.

50%
OF STUDENTS ARE
OLDER THAN 25



33%

OF GFC MSU
STUDENTS ARE

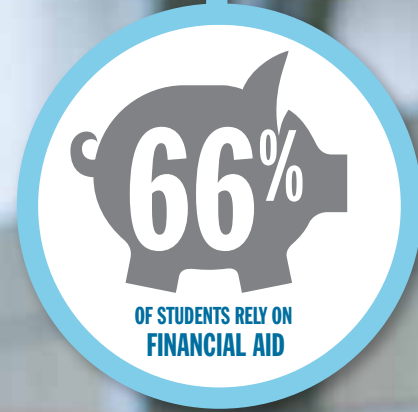
1ST GENERATION
COLLEGE STUDENTS

typically earn **\$10,200** more than those without a degree.



GIVING THE GIFT OF OPPORTUNITY

While GFCMSU is supported by the Montana University System, **these dollars unfortunately only go so far.** The college still relies greatly on private support to be able to continually enhance and expand learning opportunities in Great Falls and across the region.



“There are few moments that are more heartwarming for donors than seeing someone able to attend college and make a difference in their lives, that of their families, their community, and to see their dreams come true.” - **Dr. Susan J. Wolff, CEO/Dean**

The Impact of
**Your
Support**

85% of GFC MSU's students stay in Montana after college,



WAYS TO GIVE



MERIT & NEED-BASED SCHOLARSHIPS

Scholarships are vital to allowing many of our students to pursue their degree or certificate in a new career field.



PROGRAM SUPPORT

Private donations in support of specific programs enhance the college's ability to support a strong workforce by providing students with the most advanced and comprehensive training available in many high-demand fields.



SPECIAL PROJECTS

We welcome the opportunity to partner on special projects—including property acquisition, new construction, and program expansions or additions—that further our effort to provide the best learning opportunities and environment for our community.

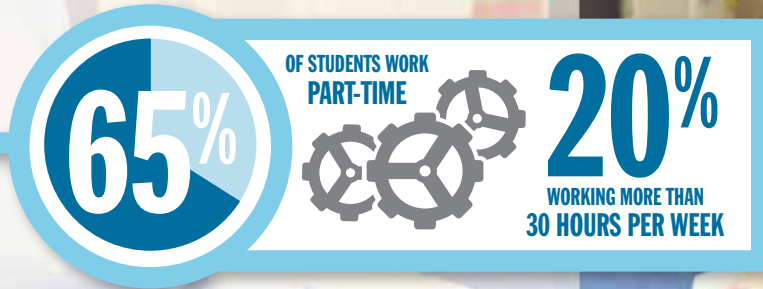
Private support from community partners will ensure GFCMSU remains a premier two-year institution of higher learning in North Central Montana.

contributing **\$43.8 million** to the regional economy.



THE IMPACT

The impact of privately invested gifts to Great Falls College MSU extends far beyond the effect on individual student's lives. A donation to GFC MSU is an important investment in our community. Recent research conducted by Economic Modeling Specialists Intl. demonstrates the widespread effect generated as a result of GFC MSU's services and total income effects in the area at \$58.1 million.



The Impact of
Your
Support

Great Falls College MSU provides a savings of **\$1.3 million** from a

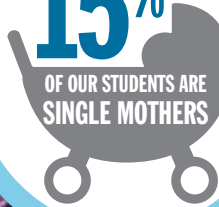


A LASTING EFFECT

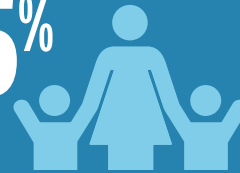
However you choose to support Great Falls College MSU, your generous gift will change individual lives in our community while also supporting a healthy economy. An annual contribution of any amount, a major gift, an endowment, or a planned gift can make a lasting impact in our Great Falls Community.

15%

OF OUR STUDENTS ARE
SINGLE MOTHERS



35%



OF STUDENTS HAVE CHILDREN AT HOME
WHO DEPEND ON THEIR CARE

reduced demand for government-funded social services in Montana.





GREAT FALLS COLLEGE

MONTANA STATE UNIVERSITY



2100 16th Avenue South Great Falls, MT 59405 | 406-771-4300 | gfcmsu.edu

The Impact of
Your
Support

**Scholarships alleviate many of the pressures students face,
allowing them to focus more on their education.**