



GREAT FALLS  
COLLEGE  
MONTANA STATE  
UNIVERSITY

Welcome!



WELCOME



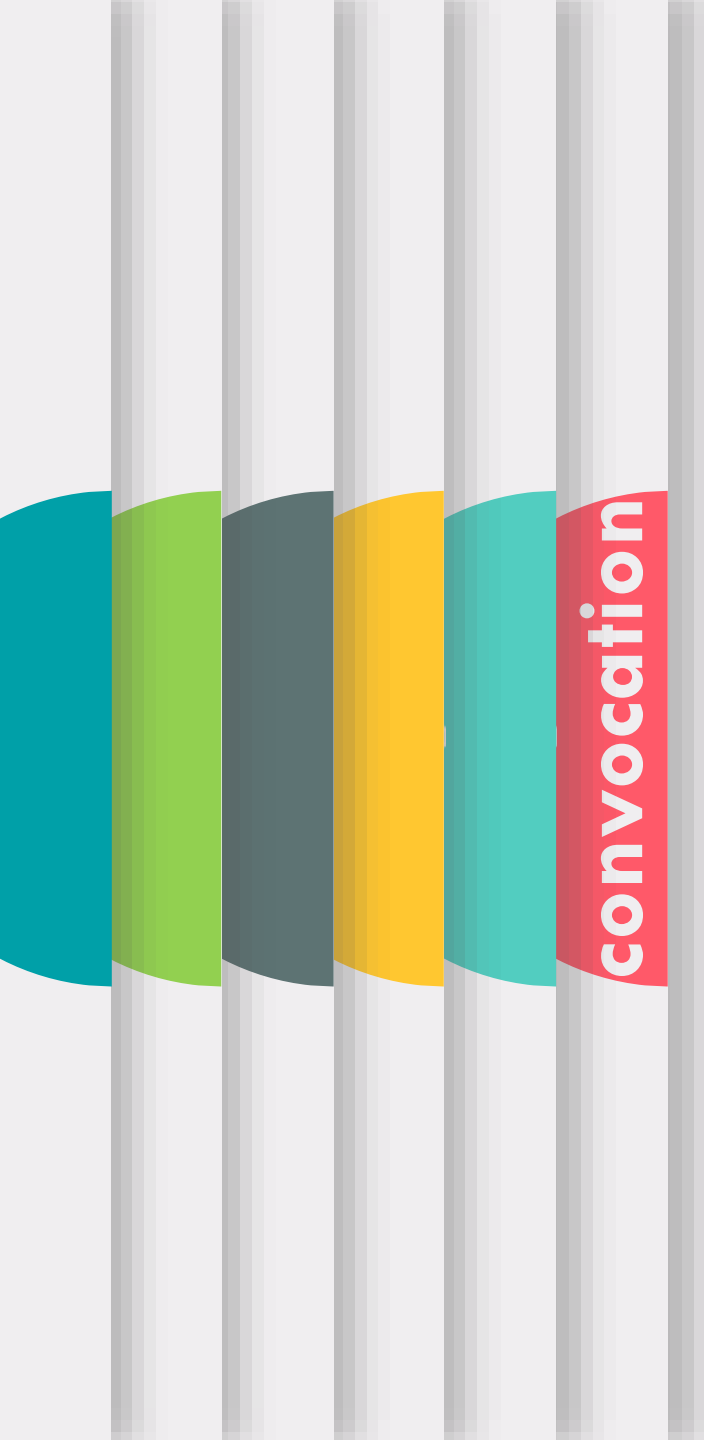


GREAT FALLS  
COLLEGE  
MONTANA STATE  
UNIVERSITY

Department Name

Approve minutes from  
12.6.24





convocation

# CAMPUS UPDATES





# SPRING CONVOCATION

**JANUARY 10**

**8:30AM-10:00AM**

We are delighted to invite you to our Convocation on January 10 from 8:30 - 10:00 AM. Join us for a continental breakfast starting at 8:00 AM.



convocation



**AWESOME**  
otters!





**GREAT FALLS  
COLLEGE**  
MONTANA STATE  
UNIVERSITY

# **AWESOME** otters!

January 2025



**Phil Carr**



**Marie Cherry**



**Jordan Laverdure**



**Jennie Miller**



**Teresa Mouser**



**GREAT FALLS  
COLLEGE**  
MONTANA STATE  
UNIVERSITY

# **AWESOME** otters!

January 2025



**Carmen Roberts**



**Toni Sawhill**



**Brian Tucker**



**Dena Wagner-Fossen**



**Doug Zander**



**Priscilla Zander**



**GREAT FALLS  
COLLEGE**  
MONTANA STATE  
UNIVERSITY

# **AWESOME** otters!

January 2025



**Elfie Neber**



**Thomas Oakberg**



**Eleazar Ortega**



**Amy Pearson**



**Mark Plante**



GREAT FALLS  
COLLEGE  
MONTANA STATE  
UNIVERSITY

# Committee and Unit Goal Update





**Dean's Office  
Strategic Plan Goal Progress**

# Dean's Office Goal 1

- Increase the number of participants who attend the Burger Burn.
- Goal Completion Date: AY 26-27 total number of attendees at Burger Burn will be 300



# Goal 1 Strategic Plan Alignment

Aligns with:

- Pillar 1-Inclusivity
- Strategic plan goal: Campus engagement
- Metric 13.1: Increase the number of participants who attend Burger Burn.



# Progress toward Goal 1

This year we served over 300 people, not counting the to-go box lunches.

**Progress=100%**

Why we met the mark...

1. Counted participants by the number of plates used
2. Revised the day of the event
3. Better event communication
4. Development board participation increased by 4





**GREAT FALLS COLLEGE**  
MONTANA STATE UNIVERSITY

# **Next Steps Goal 1**

\*Continue the momentum

# Dean's Office Goal 2

- Revise the process of BOR item submissions to improve transparency, planning, documentation, and storage.
- Goal completion date: 8/31/25



# Goal 2 Strategic Plan Alignment

Aligns with:

- Pillar 3-Excellence
- Strategic plan goal: Effectiveness
- Metric E1.1: Increase the number of process improvements implemented each fiscal year.



# Progress toward Goal 2

- Progress= 60%
- Done so far:
  1. Document with monthly submissions is updated and overseen by Toni. Document is in Teams, Dean's Office.
  2. All submissions should be routed through the Dean's Office for submission.





**GREAT FALLS COLLEGE**  
MONTANA STATE UNIVERSITY

## **Next Steps Goal 2**

- \*Continual communication with those who send reports to OCHE
- \*Kristi will monitor the checklist and send a reminder to the responsible person
- \*Responsible person will copy Kristi on the submission

# Dean's Office Goal 3

- Increase the number of participants who attend College Council.
- Goal completion date: 8/31/27



# Goal 3 Strategic Plan Alignment

Aligns with:

- Pillar 1-Inclusivity
- Strategic plan goal: Engagement
- Metric E1.1: By 2027, on average 50 attendees at each College Council meeting.



# Progress toward Goal 3

**2023-2024**  
**Average 42**

**2024-2025**  
**Average**  
**49**





**GREAT FALLS COLLEGE**  
**MONTANA STATE UNIVERSITY**

# **Next Steps Goal 3**

\*Increase attendance the months of August, January and June.





# Continuing Education & Training

## Forging Futures

Metric 12.2 - Increase the enrollment of degree-or-certificate seeking and Continuing Education and Training students.

Summary	12.2a Average FTE	Average FTE by Division	12.2b Continuing Education and Training
---------	-------------------	-------------------------	---

**Target metric 12.2b: By 2027, the enrollment of students in Continuing Education and Training will increase by 5% each year beginning in AY 2022-23.**

The table below reports the total number of enrollments in the workforce training programs offered through the Continuing Education and Training department.

Between academic years 2021-22 and 2022-23, there was a 216% increase in enrollment (an increase of 171 students).

Continuing Education and Training Enrollment in Workforce Training Programs				
Workforce Training Programs	2021-22	2022-23	2023-24	
	Baseline	Year 1	Year 2	
Boiler Training, CDL, CNA, Future Build, # Students	79	250	291	
Medical Aide, Structural Welding, # Difference from Prior AY		+ 171	+ 41	
Workforce Dental Assisting % Difference from Prior AY		+ 216%	+ 16%	

Workforce Training Programs			
Workforce Training Programs	2021-22	2022-23	2023-24
	Baseline	Year 1	Year 2
Boiler Training	18	19	39
CNA	61	169	139
Commercial Driver's License (CDL)		53	62
Future Build			13
Medical Aide		9	7
Structural Welding			25
Workforce Dental Assisting			6

## What's New:

- Basic Floor Installation
- AHA Training Center
- ECE Training Provider

## On the Horizon:

- Build MT
- Live Scan

S A T Y  
S A F E T Y  
F E

# Campus Safety Committee

(or how not to harm yourself  
while away from home)



# Our Mission

- To reduce or eliminate the incidence of occupational injury and illness through the promotion of best safety practices resulting in cost savings to the institution and reduction in lost man-hours.



# Who we are

- We are comprised of a cross section of faculty and staff. We currently have 17 members.



# What we do

- Assess safety training and awareness topics.
- Communicate with employees regarding safety committee activities.
- Develop safety rules, policies and procedures.
- Educate employees on safety related topics.
- Evaluate the safety program on a regular basis.
- Inspect the workplace.
- Review and approve SafetySmart funding requests.
- Keep job-specific training current.
- Motivate employees to create a safe culture in the workplace.
- Review workplace incidents, injuries, illnesses and fatalities.

# Why we exist

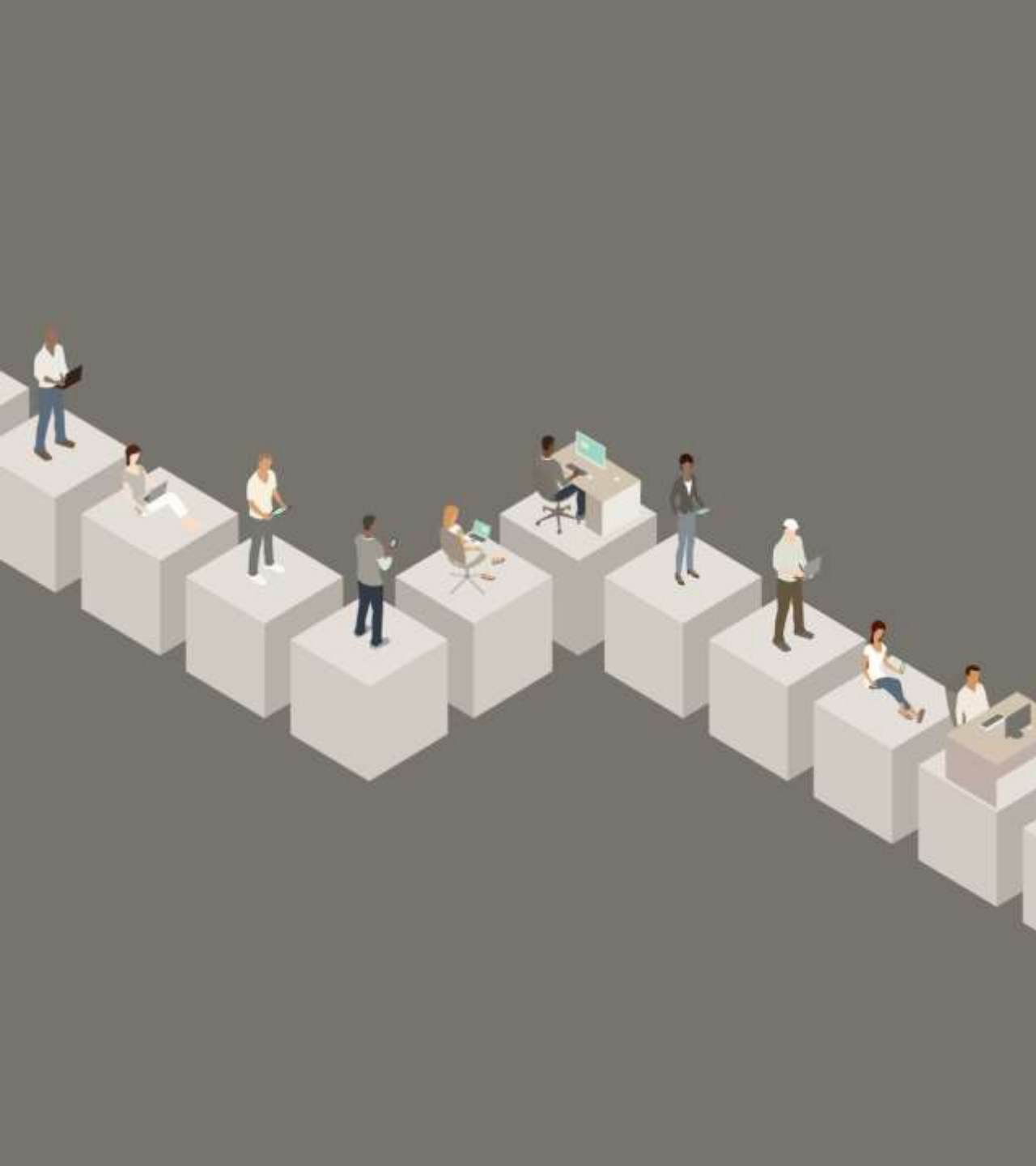


THE SAFETY COMMITTEE IS THE ONLY LEGISLATIVELY  
REQUIRED COMMITTEE IN THE MUS.



THE [SAFETY CULTURE ACT](#) ENACTED BY THE 1993  
MONTANA STATE LEGISLATURE ENCOURAGES WORKERS  
AND EMPLOYERS TO COME TOGETHER TO CREATE AND  
IMPLEMENT A WORKPLACE SAFETY PHILOSOPHY. THE ACT  
INTENDS TO RAISE WORKPLACE SAFETY TO A PREEMINENT  
POSITION IN THE MINDS OF ALL MONTANA'S WORKERS  
AND EMPLOYERS.

# Training



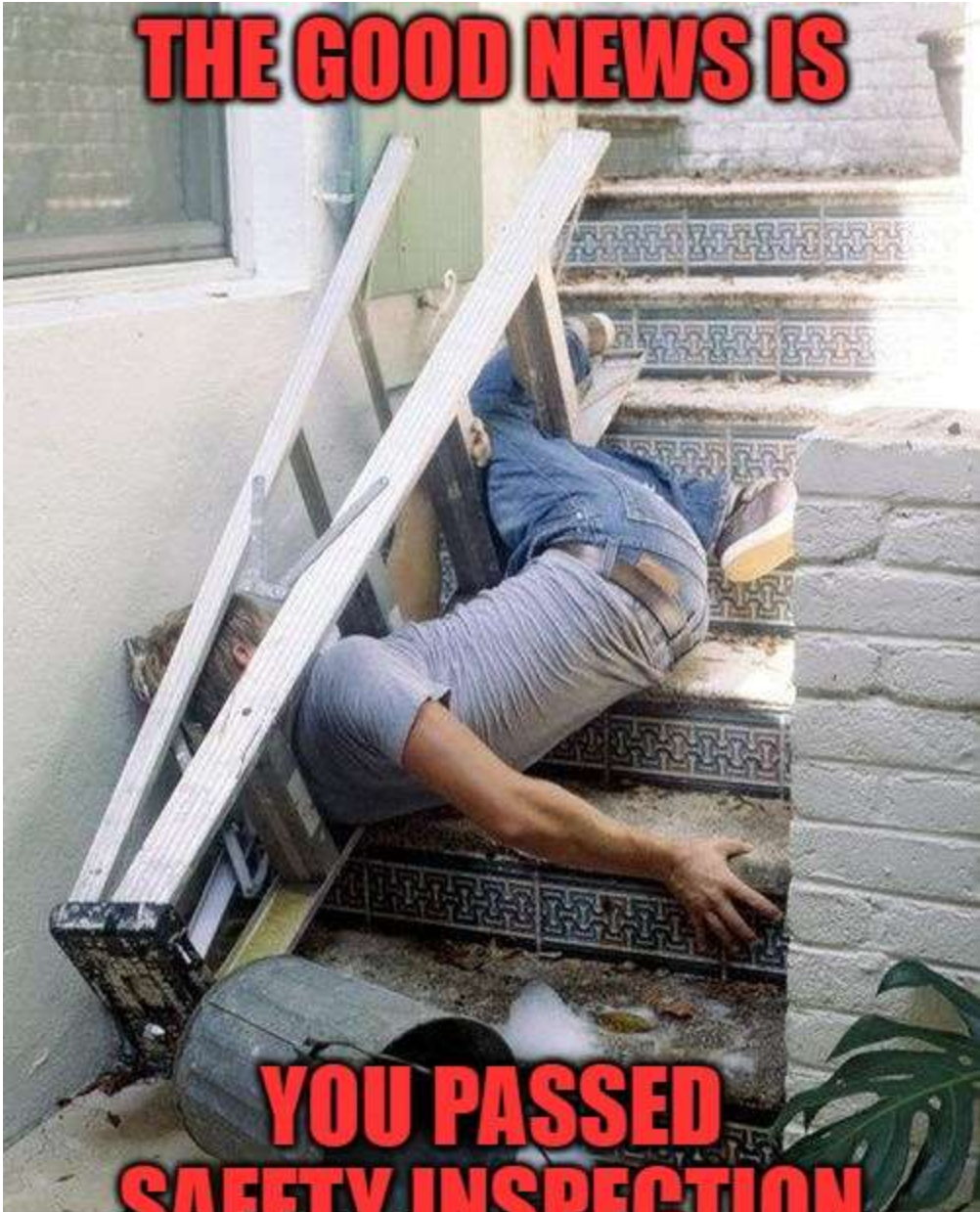
# Other Resources

- FEMA: <https://www.fema.gov>
- SafeMT: <https://www.safemt.com>

# Final Thoughts



**THE GOOD NEWS IS**



**YOU PASSED  
SAFETY INSPECTION**



**GREAT FALLS COLLEGE**  
MONTANA STATE UNIVERSITY

# IAPRC Recommendations for AY 2024-2025



**GREAT FALLS COLLEGE**  
**MONTANA STATE UNIVERSITY**

## **Dental Assistant Certificate of Applied Science**

*This program is recommended for continuation with modification as outlined by the Program Director.*

### ***Rationale for Recommendation:***

*Sustained enrollment and degree production in the Program are concerns. The expectations are to see increased enrollment and increased degree production.*



**GREAT FALLS COLLEGE**  
**MONTANA STATE UNIVERSITY**

## **Dental Hygiene Associate of Applied Science**

*This program is recommended for continuation with expectation for sustained performance.*

***Rationale for Recommendation:***

*The Associate of Applied Science degree in Dental Hygiene has increased enrollment significantly over the past year. Average annual FTE has increased as a result of this positive trend and retention rates have remained robust. Community members, external entities and legislators (stakeholders) recognize the need for this program and support its success.*



**GREAT FALLS COLLEGE**  
**MONTANA STATE UNIVERSITY**

## **Computer Programming Associate of Applied Science**

*This program is recommended for continuation with expectation for sustained performance.*

### ***Rationale for Recommendation:***

*There has been increased awareness of the program, which has helped attract more students. Efforts to promote the program through various channels have paid off, resulting in higher visibility and interest.*



**GREAT FALLS COLLEGE**  
**MONTANA STATE UNIVERSITY**

## **Cybersecurity Associate of Applied Science**

*This program is recommended for continuation with expectation for sustained performance.*

### ***Rationale for Recommendation:***

*There has been increased awareness of the program, which has helped attract more students. Efforts to promote the program through various channels have paid off, resulting in higher visibility and interest.*



**GREAT FALLS COLLEGE**  
**MONTANA STATE UNIVERSITY**

## **Cybersecurity Certificate of Technical Studies**

*This program is recommended for discontinuation.*

### ***Rationale for Recommendation:***

*The classes prepare students to take industry recognized exams, which is what the industry is looking for, but a certificate or degree is not required to take the exams. The Certificate of Technical Studies in Cybersecurity was not entirely stackable and the industry did not recognize the value of the certificate.*

# GRANTS





GREAT FALLS  
COLLEGE  
MONTANA STATE  
UNIVERSITY

# Office of Institutional Effectiveness

## Grants

Great Falls College is looking for grant opportunities that align with our strategic plan to help support our mission, services, and programs.



GREAT FALLS  
COLLEGE  
MONTANA STATE  
UNIVERSITY

# Office of Institutional Effectiveness

## Grant Process

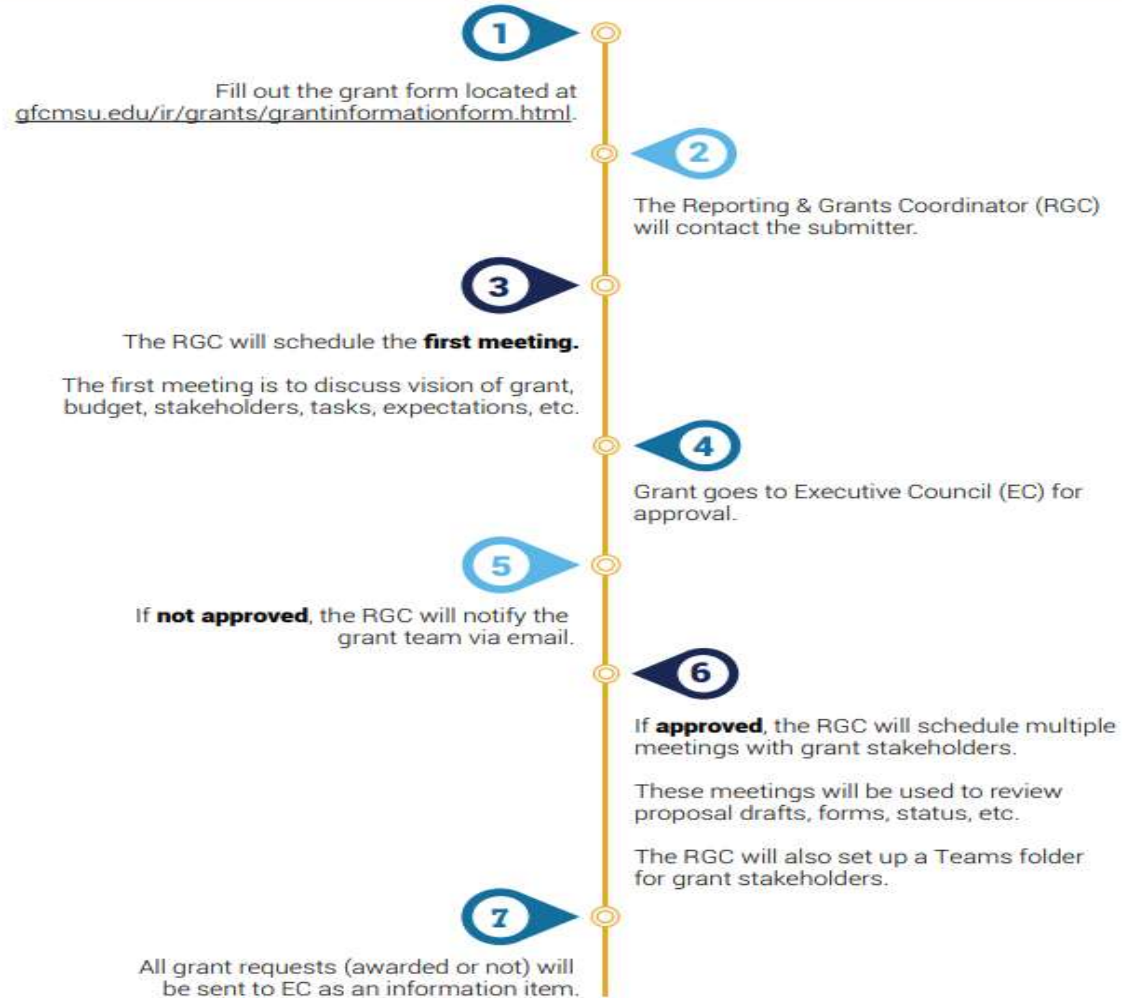
<https://www.gfcmsu.edu/ir/grants/grantinformationform.html>

<https://www.gfcmsu.edu/ir/grants/documents/Grant%20Process%20Infographic.pdf>



# Office of Institutional Effectiveness

## UNDERSTANDING THE GRANT PROCESS





GREAT FALLS  
COLLEGE  
MONTANA STATE  
UNIVERSITY

# FORGING FUTURES

FORGING FUTURES

# Schedule a time to Complete your Strategic Action Plan with a StAR member

Tom Oakberg, R251

[Book time with Thomas Oakberg](#)

Stacy Lowry, R220

[Book time with Stacy Lowry: Strategic Action Plan Help Session](#)  
• [This link will expire on: March 16, 2025](#)

Julie Barnwell, R228

[Book time with Julie Barnwell: Strategic Action Plan Help Session](#)  
• [This link will expire on: March 19, 2025](#)

Charla Merja, G65

[Book time with Charla Merja: Strategic Action Plan Help Session](#)  
• [This link will expire on: March 19, 2025](#)

Eleazar Ortega, R220

[Book time with Eleazar Ortega: Strategic Action Plan Help Session](#)  
• [This link will expire on: March 16, 2025](#)

Dena Wagner-Fossen, C105

[Book time with Dena Wagner-Fossen: Strategic Action Plan Help Session](#)  
• [This link will expire on: March 27, 2025](#)



GREAT FALLS  
COLLEGE  
MONTANA STATE  
UNIVERSITY

# POLICY

POLICY



## Changes

201.1 Copyrighted Materials

310.1 High School Dual Enrollment

311.1 Academic Forgiveness/Fresh Start

405.5 Processing Threat Reports



## Changes

308.2 Tuition & Fees Payment & Refunds

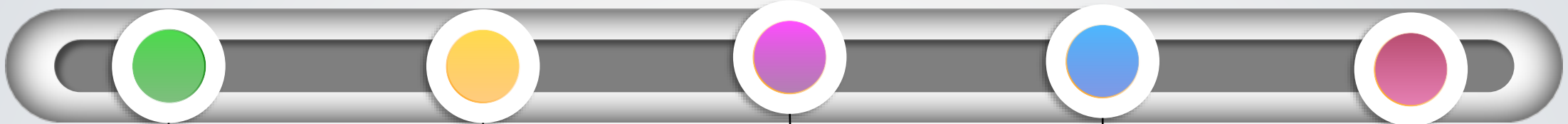
312.1 Employer Recruiter

402.4 Conflict of Interest


501.2 Fiscal Misconduct

**CAMPUS**

**EVENTS**




January Mo  
Activity  
\*Vision Boards\*



February  
Chili Cook-off



March  
Science Fair  
Night Out For  
Science



April  
Employee  
Appreciation



May  
National Otter  
Day





GREAT FALLS  
COLLEGE  
MONTANA STATE  
UNIVERSITY

# OTTER TIP OF THE MONTH



## OTTER TIP OF THE MONTH



**WELLNESS**  
MONTANA UNIVERSITY SYSTEM

# MUS Wellness Programs

- Health Screenings (Wellchecks)
- Health Coaching (Take Control)
- Online Incentive Program (Personify Health)
- WellBaby
- Employee Assistance Program (EAP)
- Hinge Health (BCBS)
- Mindfulness/Meditation
- Live and online education
  - Workshops, webinars, videos
- Wellness Champion Network
- Department Wellness Awards



~personify HEALTH™



# Ways to get involved!

- **Register for Wellcheck:** <https://myitstartswithme.com>
- **Register for Online Wellness Program (Personify Health):** <https://join.personifyhealth.com/muswell>
  - Earn up to \$40 a quarter plus \$20 for Wellcheck. (\$180 annual incentive)
- **Know our Homepage:** [www.wellness.mus.edu](http://www.wellness.mus.edu)
  - Links/Info on all Wellness Programs and Benefits!
- Interested in becoming a **Wellness Champion**? Apply!
- **Does your Department have what it takes to win Gold?**





## Contact Wellness

- [wellness@montana.edu](mailto:wellness@montana.edu)
- Neal Andrews and Kelsey Hartzheim, MSU Bozeman



GREAT FALLS  
COLLEGE  
MONTANA STATE  
UNIVERSITY

# Public Comment

# PUBLIC COMMENT





GREAT FALLS  
COLLEGE  
MONTANA STATE  
UNIVERSITY

# Upcoming Committee and Unit Goal Presenters:

- Perkins
- Staff Senate
- Bookstore
- College Council





GREAT FALLS  
COLLEGE  
MONTANA STATE  
UNIVERSITY

# Next Meeting

February 7, 2025

8:30 am- 10:00 am B101

