



GREAT FALLS
COLLEGE
MONTANA STATE
UNIVERSITY

Welcome!



WELCOME





GREAT FALLS
COLLEGE
MONTANA STATE
UNIVERSITY

Department Name

Approve minutes from 4.4.25





CAMPUS UPDATES



Alternate work Schedules

Mid-cycle wrap up

Canvas

BOR



GRADUATION

May 10, 2pm

Expo Park

Please arrive an hour before the ceremony



Graduation

Alternate work schedules

Mid-cycle wrap up

Canvas

May
20

Pre-Board
Meetings



May
20

Reception
Atrium 5:30-6:30



May
21

Board of
Regents
meetings
All day Heritage Hall



BOR

Graduation

Alternate work schedules

Mid-cycle wrap up



When?

This Summer



What?

**Course shell for
faculty, trainings for
all employee**



Who?

**Paul Lynch with more info
later!**



Canvas

BOR

Graduation



Review

Review the Peer Evaluation Report



Identify

Identify departments or committees responsible for recommendations



Prepare

Prepare for Year 7 Site Visit



Mid-cycle wrap up

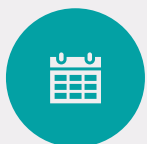
Canvas

BOR

Graduation



Support Flexibility



Work week must still total 40 hrs



Schedule must have minimal impact on students, colleagues, and the public



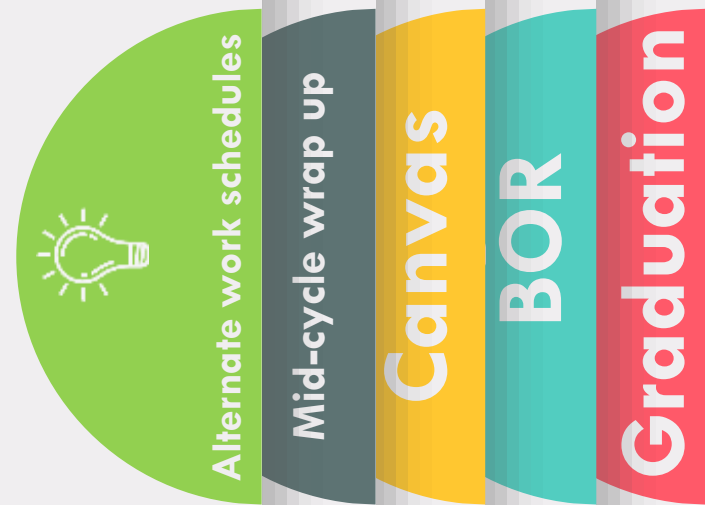
Formalizing the process



Departmental business hours remain 8 am – 5 pm, Mon- Fri



Form can be found under Personnel Forms, General forms, Alternative Schedule Request





AWESOME
otters!





GREAT FALLS
COLLEGE
MONTANA STATE
UNIVERSITY

AWESOME otters!

May 2025



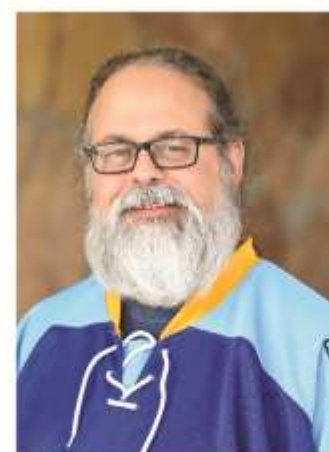
Brandy Anderson



Kellie Anderson-Taves



Julie Barnwell



Wayne Breau



Phil Carr



**GREAT FALLS
COLLEGE**
MONTANA STATE
UNIVERSITY

AWESOME otters!

May 2025



Selena Coburn



Kaia Ecklund



Kerry Dolan



Dustin Dickey



Sherry Lynn Dow



**GREAT FALLS
COLLEGE**
MONTANA STATE
UNIVERSITY

AWESOME otters!

May 2025



Calvin Gone



Leah Habel



Kris Hancke



Jan Hergesheimer



Matthew Hill



Deb Huestis



**GREAT FALLS
COLLEGE**
MONTANA STATE
UNIVERSITY

AWESOME otters!

May 2025



Teddie Lopez



Ashlynn Maczko



Ben McKinley



Brent McCafferty



Kathy Meier



**GREAT FALLS
COLLEGE**
MONTANA STATE
UNIVERSITY

AWESOME otters!

May 2025



Charla Merja



Marla McFerrin



Tom Oakberg



Dr. Amy Pearson



Jana Parsons



**GREAT FALLS
COLLEGE**
MONTANA STATE
UNIVERSITY

AWESOME otters!

May 2025



Ginny Pierce



Toni Quinn



Todd Reser



Steve Robinett



Rion Sanders



Chris Sawhill



**GREAT FALLS
COLLEGE**
MONTANA STATE
UNIVERSITY

AWESOME otters!

May 2025



Troy Stoddard



Brian Tucker



Staci Weigum



Amanda DeWitt



Dr. Leanne Frost



Priscilla Zander

10 years of Service





GREAT FALLS
COLLEGE
MONTANA STATE
UNIVERSITY

Committee and Unit Goal Update



Tenure & Promotion





GREAT FALLS
COLLEGE
MONTANA STATE
UNIVERSITY

Tenure & Promotion Committee

Purpose:

To promote excellence in teaching and learning and ensure a fair and comprehensive review of candidates applying for tenure and/or promotion.

Faculty

Membership:

Kerry Dolan, Chair

Elfie Neber, Vice Chair

Steve Robinett

Kaylene Strutz

Kim Dunlap



Summary of Work (AY 24-25):

- **9** professional development plans
- **2** promotion applications
- **1** tenure application
- Reviewed and updated committee artifacts:
 - Committee website
 - Canvas portfolio shell
 - T&P Handbook
 - PDP Form



GREAT FALLS
COLLEGE
MONTANA STATE
UNIVERSITY

Tenure & Promotion Committee

Goal Reporting:

Pillar 3 – Excellence: Learn assess and innovate.

Seek and encourage efficiency and innovation in the work of the college

Goal: Revise the ePortfolio template in Canvas to promote ease of use

Status: In progress



Next Steps:

- Finalize ePortfolio template in Canvas
- Continue the work to make the T&P process easy to navigate

Curriculum Council



GREAT FALLS
COLLEGE
MONTANA STATE
UNIVERSITY

Curriculum Council

2025 Goal update
Brad Bechard and Dr Jessica Boyer

Summary of Work

- Utilized a survey to get feedback from those faculty that submitted forms during the year
- Continue to review curriculum council forms to reflect the needs of stakeholders
 - Northwest
 - BOR
 - Accreditation
 - The institution
- See Curriculum Council website at:
<https://www.gfcmsu.edu/committees/curriculum-council/>

Membership/those involved

- **All Curriculum Council members**
- **Special thanks to:**
 - **Dena Wagner-Fossen**
 - **Dr Eleazar Ortega**
 - **Toni Quinn**
 - **Ginny Pierce**

Goal Reporting

- **Goals**
 1. **The Curriculum Council will review all council documents and update as needed to align with the needs of all stakeholders by the end of the academic year.**
 2. **Upload forms on the Website for easy access**
 3. **Include sample forms for faculty**
- **Timeframe**
 - **Will be completed by the last meeting on May 2nd**
- **Where it fits in the strategic plan**
 - **Effectiveness: Seek and encourage efficiency and innovation in the work of the college**
- **Progress**
 - **All forms will be voted on by the council on the May 2nd meeting**

Next steps

- Update completion of goals on Weave once voted on.
- Continue to assess and update forms annually reflecting the needs of our stakeholders taking into consideration feedback.



TECHNOLOGY
ASSISTANCE
CENTER



GREAT FALLS
COLLEGE
MONTANA STATE
UNIVERSITY

Information Technology

IT Unit Goal Progress





GOAL: IT will reconfigure two network closets

Indicator: By the end of year one we will have identified the required equipment and began to plan the reconfiguration of the “RED” and “BLUE” Network closets.

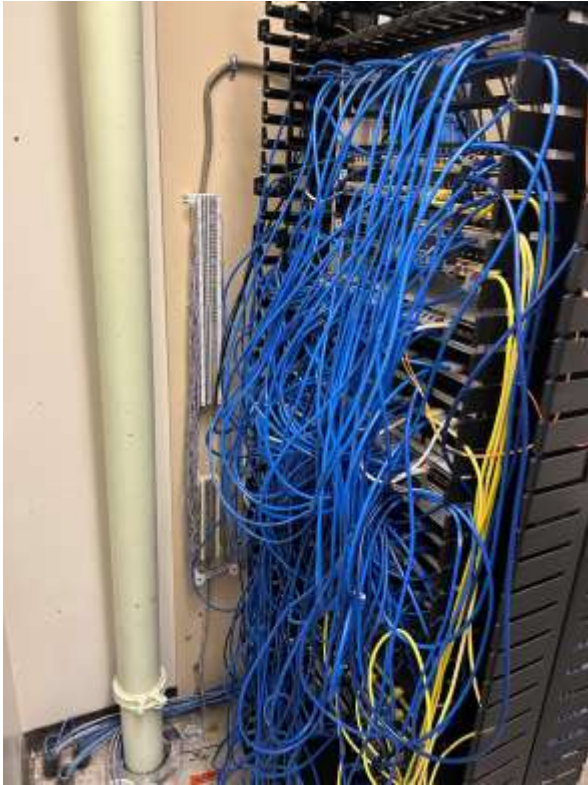
1.1 – Pillar 3: Excellence - Effectiveness



GREAT FALLS
COLLEGE
MONTANA STATE
UNIVERSITY

Information Technology

Turn This



Into



This



Progress

- Identified 100% switches and patch panels to be replaced/relocated within the rack.
- Identified 25% of existing patch cables that can be replaced with “right-sized” cables.
- Examined the need for new patch panels in each closet.



Next Steps

After Canvas and Duo change over we are going to move into renaming phones and devices with new room numbering this summer.

- Purchase any hardware/consumables for the work.
- Plan around winter break and next summer to have Red and Blue closets reconfigured to fit best practices and wiring standards.



Perkins Summary



GREAT FALLS
COLLEGE
MONTANA STATE
UNIVERSITY

PERKINS

PERKINS 2024-2025

Allocation: \$297,297.11

Spent: \$214,491.59 as of April 18, 2025



GREAT FALLS
COLLEGE
MONTANA STATE
UNIVERSITY

PERKINS

PERSONNEL

Anatomy & Physiology Support Specialist

CARE Director

Career Coach

Chemical Addictions Studies (CAS) Faculty

Welding Coordinator

Course Development – Early Childhood Education (EDEC)



GREAT FALLS
COLLEGE
MONTANA STATE
UNIVERSITY

PERKINS

PROFESSIONAL DEVELOPMENT/TRAVEL

Association of Career and Technical Education

Human Anatomy and Physiology Society

National Council for Workforce Education

Student Affairs Administration in Higher Education

Unified Communications Event & Conference



EQUIPMENT/SUPPLIES

Dental 3D Printer

Dental Digital Scanner

Tri Tool

Grinder

Wire Feeder

OTHER

Substance Abuse Event



GREAT FALLS
COLLEGE
MONTANA STATE
UNIVERSITY

PERKINS

Personnel - \$163,027.60

Professional Development/Travel - \$8,963.81

Equipment/Supplies - \$34,110.64



**GREAT FALLS
COLLEGE**
MONTANA STATE
UNIVERSITY

PERKINS

JULY 1, 2025 – JUNE 30, 2026

Allocation: \$227,553.29



PERKINS 2025-2026 REQUESTS

EQUIPMENT/SUPPLIES

Torso Anatomy Model (1) – Biology

Laser – Dental Hygiene

TIG Welder– Welding

Pulse MIG Welder (1) – Welding

Wire Feeder (1) – Welding



GREAT FALLS
COLLEGE
MONTANA STATE
UNIVERSITY

PERKINS

PROFESSIONAL DEVELOPMENT

Allied Dental Educators Program Director Conference

Calibration and Methodology Program

National Association for the Education of Young Children
Annual Conference

Perkins Coordinator Retreat



GREAT FALLS
COLLEGE
MONTANA STATE
UNIVERSITY

PERKINS

PERSONNEL

CARE Director

Career Coach

Anatomy and Physiology Support Specialist

Welding Shop Coordinator

EDEC Coordinator

OTHER

Substance Abuse Event



GREAT FALLS
COLLEGE
MONTANA STATE
UNIVERSITY

FORGING FUTURES

FORGING FUTURES



Strategic Action Plans

The Strategic Action Plan report is saved in the [College Council Teams](#). This version includes all updates from January 31, 2025.
Note: You must download the zip folder to view the report.

The screenshot shows a Microsoft Teams interface. On the left, the 'College Council' team is selected, and the 'Forging Futures' channel is active. The main area displays the 'Strategic Action Plans' folder, which contains three files:

Name
20240406 SAP Report.zip
20240910 Strategic Action Plan report table...
20250421 Strategic Action Plans.zip

Two blue arrows point to the 'College Council' team and the '20250421 Strategic Action Plans.zip' file.



StAR Committee

College Council

January 2025

In Progress

1 GOALS 1 OUTCOMES 1 MEASURES 1 TARGETS 1 FINDINGS 1 ATTACHMENTS

Strategic Plan Goal	Metric	Target Metrics	Resource Needs
<p>1 Pillar Pillar 1: Inclusivity Remove barriers and provide support.</p>			
<p>Outcome has action plan</p>			
<p>1.1 Campus Engagement Create excitement for campus activities and events.</p> <p>ACTION PLAN In Progress Goal: Increase the number of participants who attend College Council. Indicator: By 2027, there will be at least 50 employees (on average) who attend College Council. DUE 6/30/2027</p>	<p>1.1.1 I3.1 Increase the number of participants who attend campus-sponsored events. N/A</p>	<p>1.1.1.1 Partially Met N/A Target metric I3.1a: By 2027, the total number of duplicated participants who attend targeted campus-sponsored events will increase by 25%.</p>	<p>None</p> <p>SUMMARY OF PROGRESS</p> <p>As of January 2025, we are 90% of the way to completing the goal. The agendas have set topics, including the addition of a public comments time. They are drafted and posted in a timely fashion. We have added agenda items that will hopefully attract interest. We have created an attendance tracker and every meeting the participants are counted and added to the spreadsheet (attached). We have identified three months with the lowest attendance - January, June, and August and are working to figure out a way to increase attendance those months.</p>





Strategic Action Plans

After progress updates are submitted:

- StAR reviews them for thoroughness (was anything left blank, etc.);
- StAR's Executive Council liaison shares the report with the Executive Council;
- StAR shares the report with College Council.

These reports were used as examples of how the College regularly reviews data to help make decisions for our mid-cycle report and visit.

In preparation for the year 7 report and visit, we will continue documenting these updates to make note of examples of how the College took action after reviewing data regularly.



GREAT FALLS
COLLEGE
MONTANA STATE
UNIVERSITY

POLICY

POLICY



GREAT FALLS
COLLEGE
MONTANA STATE
UNIVERSITY

Policies to Approve

Policy Changes

902.1 Student Borrowers

902.4 Faculty & Staff Borrowers

902.5 Community Patrons



GREAT FALLS
COLLEGE
MONTANA STATE
UNIVERSITY

OTTER TIP OF THE MONTH



OTTER TIP OF THE MONTH



-  Account
-  Admin
-  Dashboard
-  Courses
-  Calendar
-  Inbox
-  History
-  Commons
-  ReadSpeaker
-  TextAid
-  TextAid
-  Help

Dashboard

[See all courses](#)

Published Courses (3)



GFCMSU Canvas Bootcamp
Canvas Bootcamp



Growing With Canvas
Growing With Canvas (Teacher Tra...)
Growing With Canvas (Teache...)



GFCMSU Tech Onboarding
GFCMSU Tech Onboarding

Unpublished Courses (7)



Canvas Lab 1
Canvas Lab 1



Canvas Lab 2
Canvas Lab 2



Canvas Lab 3
Canvas Lab 3



Home

Simple Search

Announcements

Syllabus

Modules

Grades

New Analytics

Microsoft OneDrive

Panorama

Discussions

Smart Search

Rubrics

Assignments

Collaborations

People

Quizzes

Files

Paul Lynch Sandbox 2

Assign To Edit

Course Title Here



Welcome!

[**Instructor Note:** Add an introductory message to the class. Please include the course modality. Instructors can add additional information to the bullet points. These may include Teams or Webex links for virtual office hours or Bookings links.]

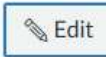
- Instructor Name:
- Instructor Email:
- Instructor Phone Number:
- Office Hours:



- Home
- Simple Search
- Announcements ⌘
- Syllabus**
- Modules
- Grades
- New Analytics
- Microsoft OneDrive
- Panorama
- Discussions
- Smart Search
- Rubrics ⌘
- Assignments ⌘
- Collaborations ⌘
- People ⌘
- Quizzes ⌘

Course Syllabus

Jump to Today



📖 Course Syllabus

Instructor Note: Upload a copy of your course syllabus file to this page. Use the following guide to [embed a file or link to your syllabus page](#). 📄

The Course Summary is **automatically generated** for the course and contains a list of course assignments and course calendar events. Learn More: [Canvas Resources for Instructors - Course Syllabus](#).

Course Summary:

Date	Details	Due
	📄 Module 1 Assignment: [Title Here] ⌘	
	🗨 Module 1 Discussion: [Title Here] ⚠	
	📄 Module 1 Quiz: [Title Here] ⌘	

May 2025						
<						>
27	28	29	30	1	2	3
4	5	6	7	8	9	10
11	12	13	14	15	16	17
18	19	20	21	22	23	24
25	26	27	28	29	30	31
1	2	3	4	5	6	7

Assignments are weighted by group:

Group	Weight
Assignments	0%
Discussions	0%
Quizzes	0%
Total	0%





Teaching and Learning Center

☰ Paul Lynch Sandbox 2 > Modules

63 View as Student

- Home
- Simple Search
- Announcements
- Syllabus
- Modules**
- Grades
- New Analytics
- Microsoft OneDrive
- Panorama
- Discussions
- Smart Search
- Rubrics
- Assignments
- Collaborations
- People
- Quizzes
- Files
- Pages
- Outcomes
- Panopto Recordings

▶ Jump to Module

☰	▼ Instructor Module (Do Not Publish)	⊗	▼	+	⋮
☰	About This Template	⊗			⋮
☰	📄 Template: Overview and Instructor Notes	⊗			⋮
☰	📄 Template: Icons, Banners, & Buttons Customization Options	⊗			⋮
☰	📄 Template: How to Customize	⊗			⋮
☰	Faculty Resources and Support	⊗			⋮
☰	📄 Canvas Resources and Support for Instructors	⊗			⋮
☰	📄 YuJa Panorama: Accessibility Resources for Faculty	⊗			⋮
☰	Regular & Substantive Interaction (RSI)	⊗			⋮
☰	📄 RSI: Weeks 1-8 (Required)	⊗			⋮
☰	📄 RSI: Weeks 9-16 (if needed)	⊗			⋮





☰ Paul Lynch Sandbox 2 > Modules

👤 View as Student

⬆️ Back to top

- Home
- Simple Search
- Announcements 🗨
- Syllabus
- Modules**
- Grades
- New Analytics
- Microsoft OneDrive
- Panorama
- Discussions
- Smart Search
- Rubrics 🗨
- Assignments 🗨
- Collaborations 🗨
- People 🗨
- Quizzes 🗨
- Files 🗨
- Pages 🗨
- Outcomes 🗨
- Panopto Recordings
- Settings

• Module 1 [Title or Theme Here + DATE RANGE]		✓	+	⋮
⋮	Overview	✓		⋮
⋮	📄 Module 1 Overview and Activities 📄	✓		⋮
⋮	Content	✓		⋮
⋮	📄 Module 1 [Instructional Content, Add Title Here] 📄	✓		⋮
⋮	📄 Module 1 Module Resources 📄	✓		⋮
⋮	Learning Activities	✓		⋮
⋮	📄 Module 1 Assignment: [Title Here] 📄 0 pts	✓		⋮
⋮	🗨 Module 1 Discussion: [Title Here] 🗨 0 pts	✓		⋮
⋮	Assessment	✓		⋮
⋮	📄 Module 1 Quiz: [Title Here] 📄 0 pts	✓		⋮





What Other Resources Do We Have?

- [\[Faculty\] Canvas Course Checklist](#)
- [GFCMSU Canvas Website](#)
 - [GFCMSU Getting started in canvas for students](#)
- Canvas Transition Banner on [Current Students](#) page
- [Students] Passport to Canvas
 - Student version of Growing with Canvas (Faculty Training)



GREAT FALLS
COLLEGE
MONTANA STATE
UNIVERSITY

Public Comment

PUBLIC COMMENT





GREAT FALLS
COLLEGE
MONTANA STATE
UNIVERSITY

Upcoming Committee and Unit Goal Presenters:

- Strategic Enrollment Management
- Library
- Academic Divisions





**GREAT FALLS
COLLEGE**
MONTANA STATE
UNIVERSITY

Next Meeting

June 6, 2025

8:30 am- 10:00 am B101

